



Rutland Road, London, E9

BUTLER & STAG



One bedroom apartment situated on the fourth floor of this secure development with views over Victoria Park, available now.



- Views over Victoria Park
- Local Shops & Restaurants
- Available Now
- Fitted kitchen
- Private Balcony
- Great Condition
- Modern Interior
- Spacious Living

Available now is this one bed apartment which is accessed via secure entrance with lift leading to the fourth floor, this stunning apartment boasts a well-presented living space with French doors leading to a west facing private balcony, separate kitchen area. Completing the property there is a smart bathroom and double sized bedroom.



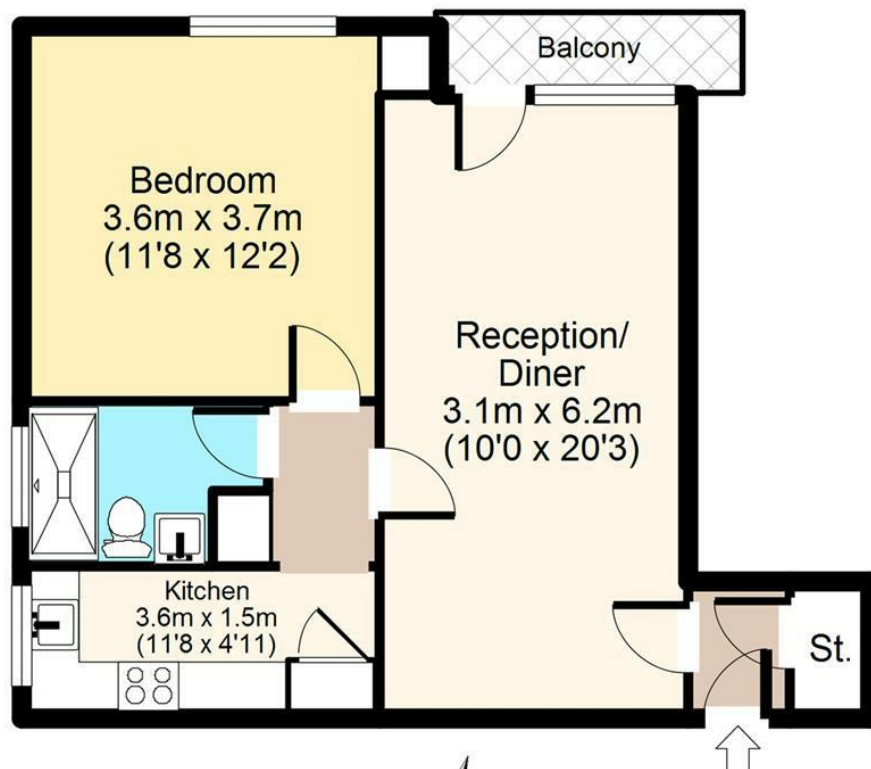
Park Side Estate borders the award-winning Victoria Park one of east London's most spacious alfresco-eating spots, with two lakes, a boating pond, the much loved Pavilion (waterside) café, playgrounds, and a scattering of other Instagram-worthy delights. In close proximity is the renowned Chisenhale Gallery, famous for presenting some of the world's most celebrated artists and not forgetting the Historic Roman Road home to neighbourhood favourites Zealand Cafe, Brixton, Pizza, Mae + Harvey and Whole Fresh, which sit alongside the traditional street market, which runs thrice weekly.



Victoria Park, E9



Fourth Floor



Total area: approx. 47 sq. metres (504 sq. feet)
For illustration purposes only - not to scale

IMPORTANT NOTICE - These particulars have been prepared in good faith and they are not intended to constitute part of an offer or contract. We have not performed a structural survey on this property and the services, appliances and specific fittings have not been tested. All photographs, measurements, floor plans and distances referred to are given as a guide and should not be relied upon.

BUTLER & STAG

☎ 020 8102 1236

🏠 508 Roman Road, Bow, London, E3 5LU

✉ bow@butlerandstag.com

www.butlerandstag.uk